

## 测试报告

No. CANEC1613059104

日期: 2016年07月11日 第1页,共6页

深圳市新嘉理包装制品厂

中国深圳市光明新区公明楼村世峰科技园L栋3A

以下测试之样品是由申请者所提供及确认: 铝箔袋

SGS工作编号: CP16-042549 - SZ  
主要成份: PET/AL/LDPE NY/AL/LDPE  
样品接收日期: 2016年07月06日  
测试周期: 2016年07月06日 - 2016年07月11日  
测试要求: 根据客户要求测试  
测试方法: 请参见下一页  
测试结果: 请参见下一页  
结论: 基于所送样品的指定部位进行的测试, 镉、铅、汞、六价铬、多溴联苯(PBBs)、多溴二苯醚(PBDEs)的测试结果不超过欧盟RoHS指令2011/65/EU附录II的修正指令(EU) 2015/863的限值要求。

基于所送样品进行测试, 委托检验包装样品的总铅、镉、汞和六价铬含量之和符合美国包装材料法案中有害物质限量的有关规定 (TPCH:包装材料中有害物质) (前身为CONEG)。

通标标准技术服务有限公司广州分公司  
授权签名

史丽兰

Violet, Shi 史丽兰  
批准签署人

备注: 本报告是编号为CANEC1613059103报告的中文版本。



## 测试报告

No. CANEC1613059104

日期: 2016年07月11日 第2页,共6页

测试结果:

### 测试样品描述:

样品编号	SGS样品ID	描述
SN1	CAN16-130591.002	银色袋

备注:

- (1) 1 mg/kg = 1 ppm = 0.0001%
- (2) MDL = 方法检测限
- (3) ND = 未检出 (< MDL)
- (4) "-" = 未规定

### RoHS指令2011/65/EU附录II的修正指令(EU) 2015/863

- 测试方法:
- (1) 参考IEC 62321-5:2013, 用ICP-OES测定镉的含量
  - (2) 参考IEC 62321-5:2013, 用ICP-OES测定铅的含量
  - (3) 参考IEC 62321-4:2013, 用ICP-OES测定汞的含量
  - (4) 参考IEC 62321:2008, 用紫外-可见分光光度计比色法测定六价铬的含量
  - (5) 参考IEC 62321-6:2015, 用GC-MS测定PBBs(多溴联苯)和PBDEs(多溴二苯醚)的含量

测试项目	限值	单位	MDL	002
镉 (Cd)	100	mg/kg	2	ND
铅 (Pb)	1,000	mg/kg	2	ND
汞 (Hg)	1,000	mg/kg	2	ND
六价铬(Cr(VI))	1,000	mg/kg	2	ND
多溴联苯之和(PBBs)	1,000	mg/kg	-	ND
一溴联苯	-	mg/kg	5	ND
二溴联苯	-	mg/kg	5	ND
三溴联苯	-	mg/kg	5	ND
四溴联苯	-	mg/kg	5	ND
五溴联苯	-	mg/kg	5	ND
六溴联苯	-	mg/kg	5	ND
七溴联苯	-	mg/kg	5	ND
八溴联苯	-	mg/kg	5	ND
九溴联苯	-	mg/kg	5	ND
十溴联苯	-	mg/kg	5	ND
多溴二苯醚之和(PBDEs)	1,000	mg/kg	-	ND
一溴二苯醚	-	mg/kg	5	ND
二溴二苯醚	-	mg/kg	5	ND



Unless otherwise agreed in writing, this document is issued by the Company subject to its General Conditions of Service printed overleaf, available on request or accessible at <http://www.sgs.com/en/Terms-and-Conditions.aspx> and, for electronic format documents, subject to Terms and Conditions for Electronic Documents at <http://www.sgs.com/en/Terms-and-Conditions/Terms-e-Documents.aspx>. Attention is drawn to the limitation of liability, indemnification and jurisdiction issues defined therein. Any holder of this document is advised that information contained hereon reflects the Company's findings at the time of its intervention only and within the limits of Client's instructions, if any. The Company's sole responsibility is to its Client and this document does not exonerate parties to a transaction from exercising all their rights and obligations under the transaction documents. This document cannot be reproduced except in full, without prior written approval of the Company. Any unauthorized alteration, forgery or falsification of the content or appearance of this document is unlawful and offenders may be prosecuted to the fullest extent of the law. Unless otherwise stated the results shown in this test report refer only to the sample(s) tested.

Attention: To check the authenticity of testing /inspection report & certificate, please contact us at telephone: (86-755) 8307 1443, or email: CN\_Doccheck@sgs.com

## 测试报告

No. CANEC1613059104

日期: 2016年07月11日 第3页,共6页

测试项目	限值	单位	MDL	002
三溴二苯醚	-	mg/kg	5	ND
四溴二苯醚	-	mg/kg	5	ND
五溴二苯醚	-	mg/kg	5	ND
六溴二苯醚	-	mg/kg	5	ND
七溴二苯醚	-	mg/kg	5	ND
八溴二苯醚	-	mg/kg	5	ND
九溴二苯醚	-	mg/kg	5	ND
十溴二苯醚	-	mg/kg	5	ND

### 备注:

- (1) 最大允许极限值引用自RoHS指令(EU) 2015/863。
- (2) 2015年6月4号发表在欧盟官方杂志(官方公报)上的RoHS指令(EU) 2015/863附录II限值中还包括邻苯二甲酸酯BBP, DBP, DEHP和DIBP。新的指令限制了电子电器产品的每一个均一材质中邻苯二甲酸酯含量不得超过0.1%。
- (3) 2021年7月22号开始, DEHP, BBP, DBP 和 DIBP的限制适用于医疗器械, 包括体外医疗器械, 监控仪表, 包括工业监测和控制仪器。
- (4) DEHP, BBP, DBP 和 DIBP的限制不适用于2019年7月22日前投放市场的电缆及电子电气产品中用于维修、重复利用、功能更新及容量提升的备用配件以及2021年7月22日前投放市场的医疗器械, 包括体外医疗器械, 监控仪表, 包括工业监测和控制仪器。
- (5) DEHP、BBP 和 DBP的限制不适用于玩具产品, 因为No.1907/2006附录XVII第51条已对玩具产品中的DEHP、BBP 和 DBP含量进行了限制。

### 美国包装材料法案中规定的有害物质(TPCH - 包装材料中有害物质)(前身为CONEG) - 总铅、镉、汞和六价铬的含量

测试方法: 参考GZTC CHEM-TOP-174-01, 采用ICP-OES分析总铅、镉、汞, 采用紫外-可见分光光度计分析六价铬。

测试项目	限值	单位	MDL	002
镉 (Cd)	-	mg/kg	5	ND
铅 (Pb)	-	mg/kg	5	ND
汞 (Hg)	-	mg/kg	5	ND
六价铬 (CrVI)	-	mg/kg	5	ND
总量 (Pb + Cd + Cr VI + Hg)	100	mg/kg	-	ND

### 备注:

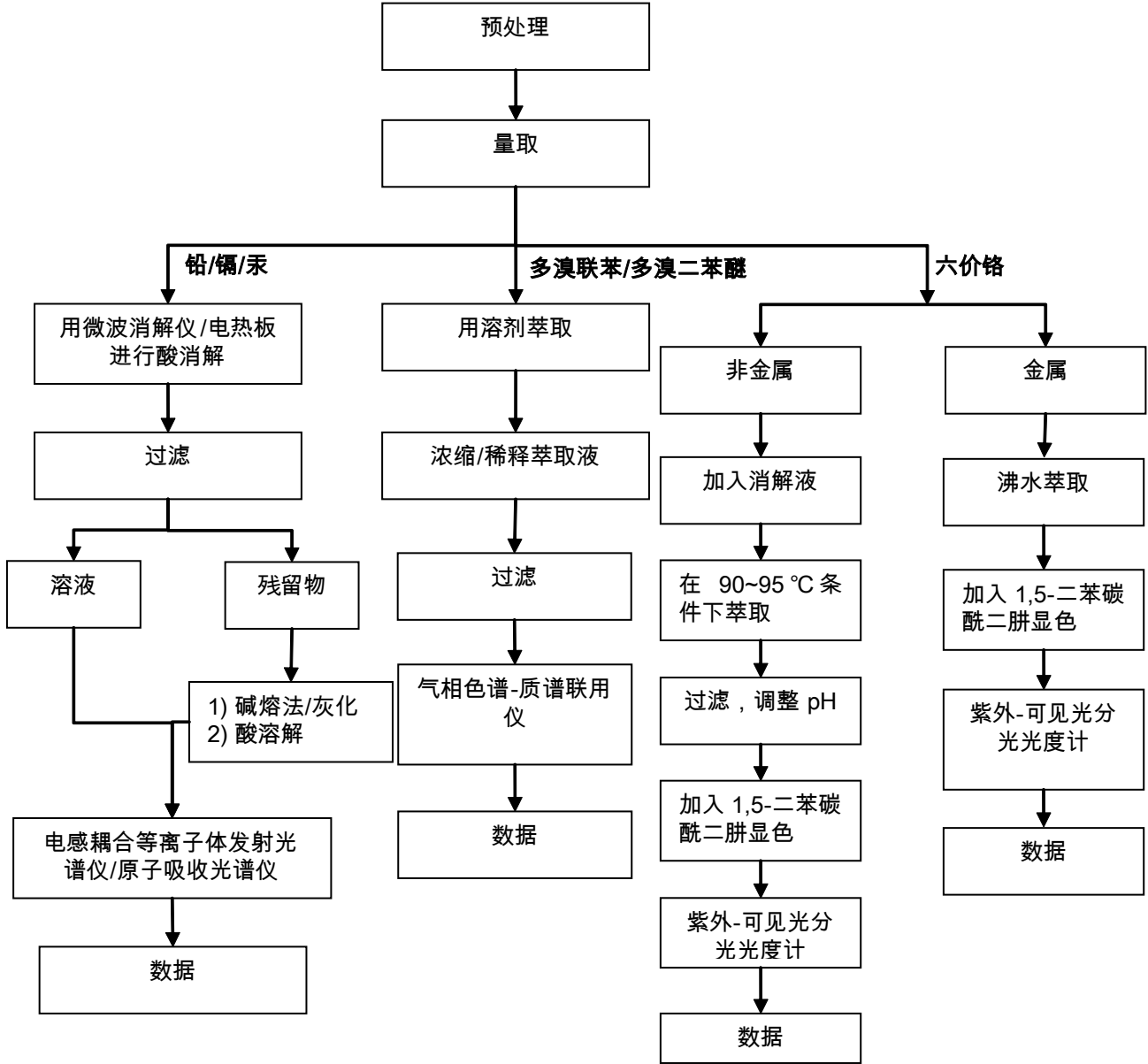
- (1) TPCH中关于包装材料中有害物质的相关规定由以下州(美国)审议并立法通过, 加利福尼亚州, 康涅狄格州, 佛罗里达州, 乔治亚州, 伊利诺伊斯州, 爱荷华州, 缅因州, 马里兰州, 明尼苏达州, 密苏里州, 新罕布什尔州, 新泽西州, 纽约州, 宾夕法尼亚州, 罗得岛州, 佛蒙特州, 弗吉尼亚州, 华盛顿州和威斯康星州。



附件

**Pb/Cd/Hg/Cr<sup>6+</sup>/PBBs/PBDEs 测试流程图**

- 1) 分析人员：肖戈 / 胡香云
- 2) 项目负责人：汪丹 / 余晓璐
- 3) 样品按照下述流程被完全消解 (六价铬和多溴联苯 / 多溴二苯醚测试除外)。



Unless otherwise agreed in writing, this document is issued by the Company subject to its General Conditions of Service printed overleaf, available on request or accessible at <http://www.sgs.com/en/Terms-and-Conditions.aspx> and, for electronic format documents, subject to Terms and Conditions for Electronic Documents at <http://www.sgs.com/en/Terms-and-Conditions/Terms-e-Documents.aspx>. Attention is drawn to the limitation of liability, indemnification and jurisdiction issues defined therein. Any holder of this document is advised that information contained hereon reflects the Company's findings at the time of its intervention only and within the limits of Client's instructions, if any. The Company's sole responsibility is to its Client and this document does not exonerate parties to a transaction from exercising all their rights and obligations under the transaction documents. This document cannot be reproduced except in full, without prior written approval of the Company. Any unauthorized alteration, forgery or falsification of the content or appearance of this document is unlawful and offenders may be prosecuted to the fullest extent of the law. Unless otherwise stated the results shown in this test report refer only to the sample(s) tested.

Attention: To check the authenticity of testing /inspection report & certificate, please contact us at telephone: (86-755) 8307 1443, or email: CN\_Doccheck@sgs.com

SGS-CSTC 标准检测技术有限公司 广州分公司  
Guangzhou Branch Testing Center Chemical Laboratory

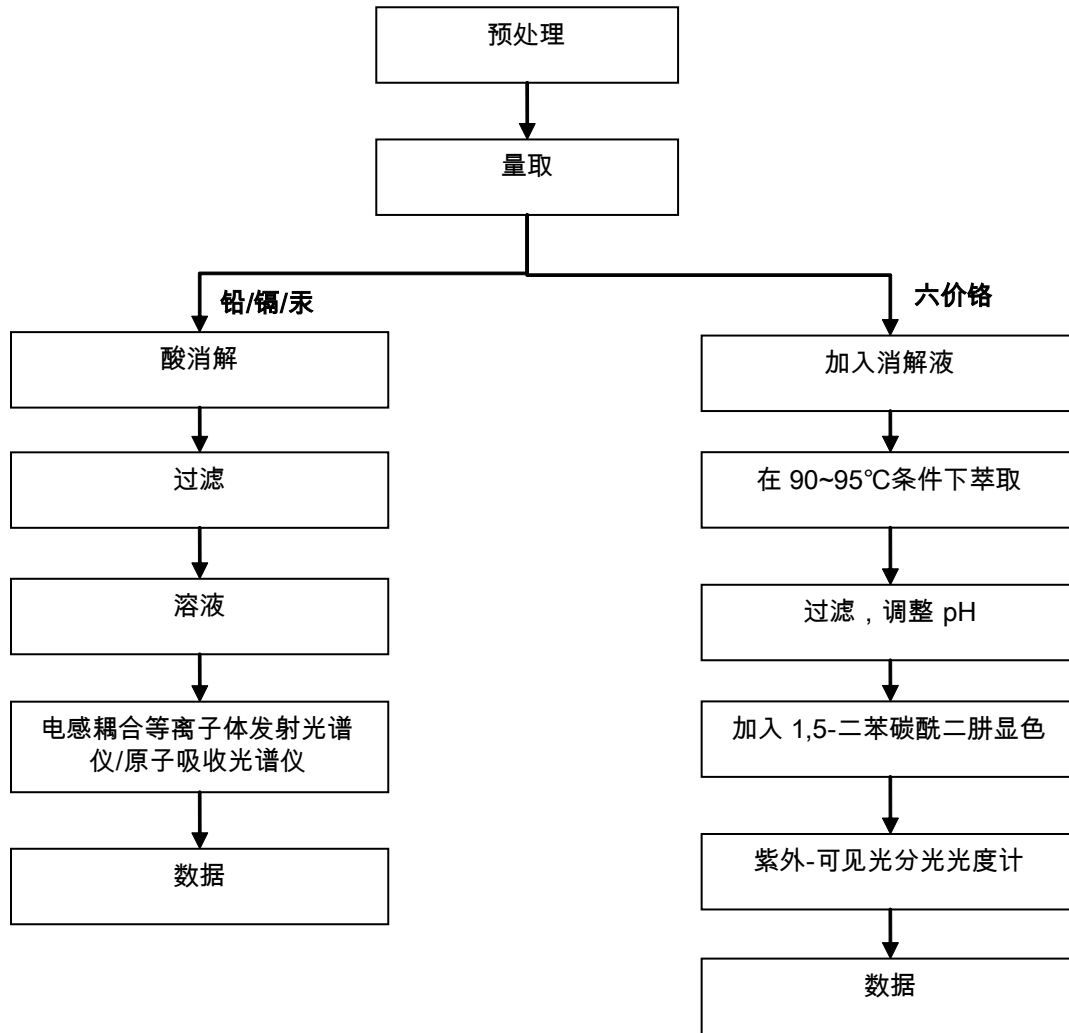
198 Kazhu Road, Sciotech Park Guangzhou Economic & Technology Development District, Guangzhou, China 510663 t (86-20) 82155555 f (86-20) 82075113 www.sgs.com.cn  
中国·广州·经济技术开发区科学城科珠路198号 邮编: 510663 t (86-20) 82155555 f (86-20) 82075113 e sgs.china@sgs.com



附件

Pb/Cd/Hg/Cr<sup>6+</sup> 测试流程图

- 1) 分析人员：肖戈
- 2) 项目负责人：汪丹



样品照片:



此照片仅限于随SGS正本报告使用

\*\*\* 报告完 \*\*\*



Unless otherwise agreed in writing, this document is issued by the Company subject to its General Conditions of Service printed overleaf, available on request or accessible at <http://www.sgs.com/en/Terms-and-Conditions.aspx> and, for electronic format documents, subject to Terms and Conditions for Electronic Documents at <http://www.sgs.com/en/Terms-and-Conditions/Terms-e-Documents.aspx>. Attention is drawn to the limitation of liability, indemnification and jurisdiction issues defined therein. Any holder of this document is advised that information contained hereon reflects the Company's findings at the time of its intervention only and within the limits of Client's instructions, if any. The Company's sole responsibility is to its Client and this document does not exonerate parties to a transaction from exercising all their rights and obligations under the transaction documents. This document cannot be reproduced except in full, without prior written approval of the Company. Any unauthorized alteration, forgery or falsification of the content or appearance of this document is unlawful and offenders may be prosecuted to the fullest extent of the law. Unless otherwise stated the results shown in this test report refer only to the sample(s) tested.

Attention: To check the authenticity of testing /inspection report & certificate, please contact us at telephone: (86-755) 8307 1443, or email: [CN\\_Doccheck@sgs.com](mailto:CN_Doccheck@sgs.com)